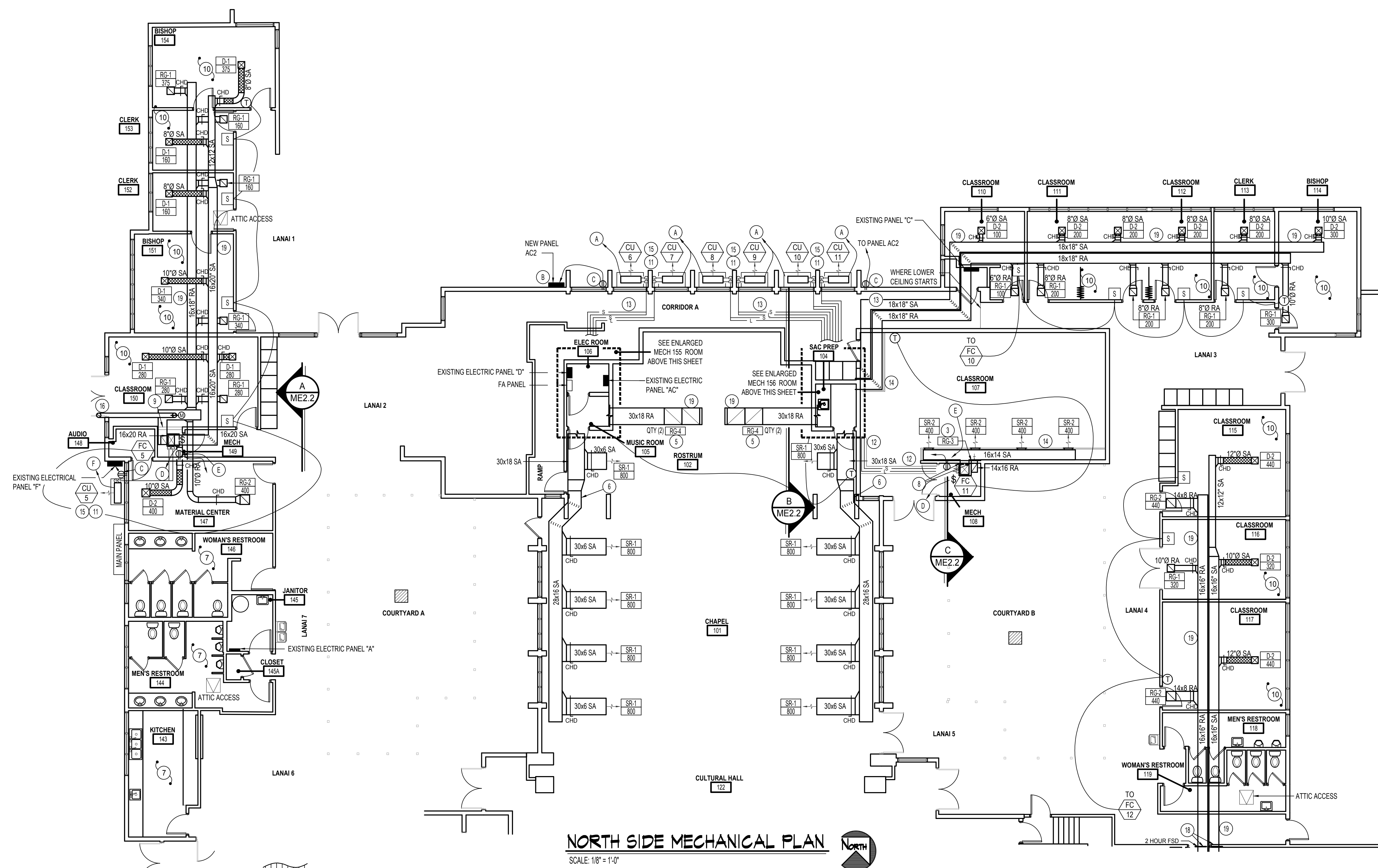
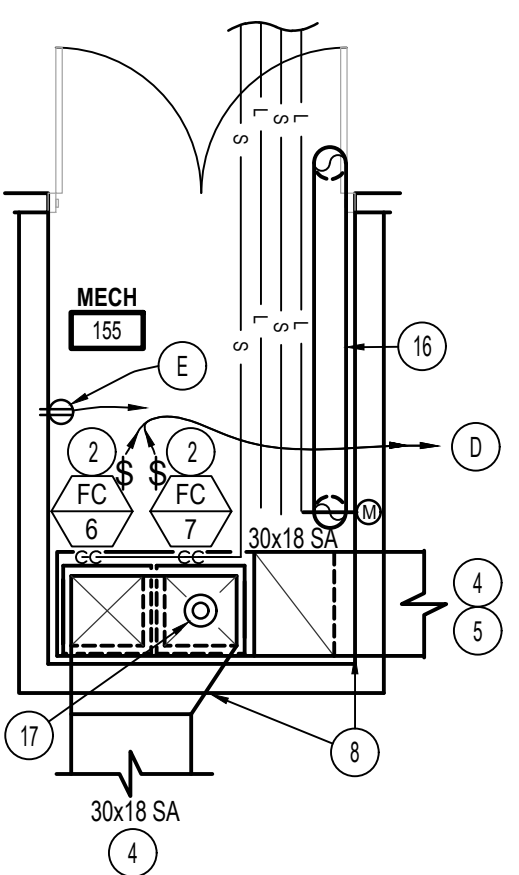


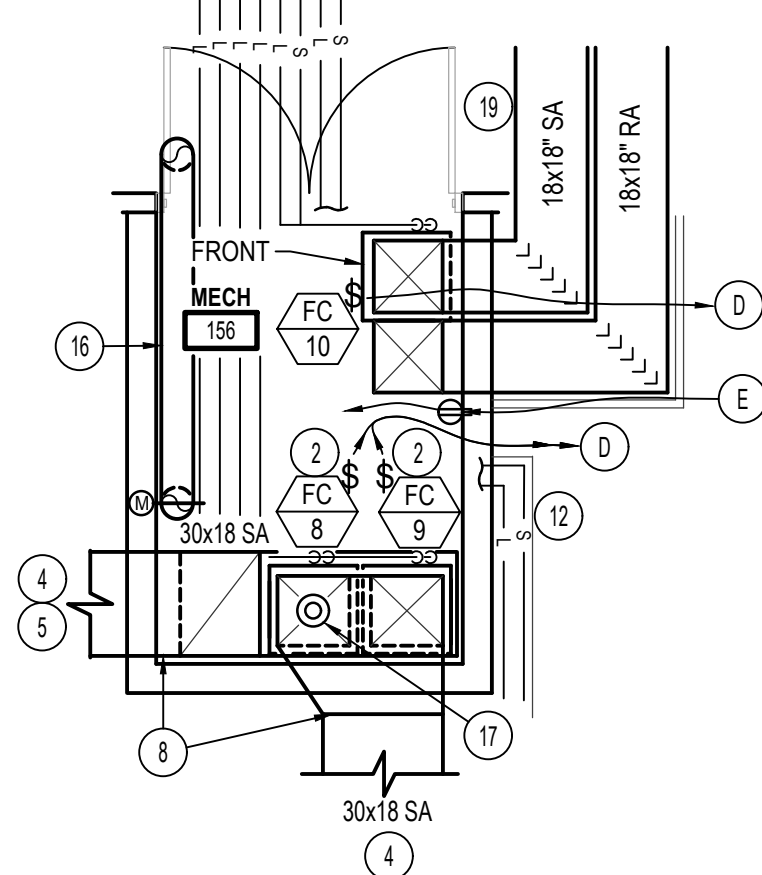
F:\2020\040 LDS Laid 1,8 9\2020\040 Hawaii Laid.dwg Nov 13, 2020 - 11:29am



NORTH SIDE MECHANICAL PLAN
SCALE: 1/8" = 1'-0"



MECH ROOM 155 PLAN
SCALE: 1/4" = 1'-0"



MECH ROOM 156 PLAN
SCALE: 1/4" = 1'-0"

MECHANICAL NOTES:

- 1 PENETRATE AND INSTALL LINTEL AS NEEDED FOR ACCESS THROUGH EXISTING BRICK WALL. FIELD VERIFY EXISTING CONDITIONS IN CEILING SPACE. INSTALL COVER AFTER CONSTRUCTION.
- 2 KEEP 3" CLEARANCE IN FRONT OF FAN COIL FOR SERVICING.
- 3 MIN QTY (2) 90° TURNS FROM FAN COIL TO GRILLE FOR SOUND ISOLATION.
- 4 SEE THIS SHEET FOR CONTINUATION.
- 5 RUN RETURN DUCT IN SLOPE OF CEILING SPACE. INSTALL RETURN GRILLES AS HIGH AS POSSIBLE. SEE SECTION VIEW ON SHEET ME2.2. REMOVE EXISTING CEILING AS REQUIRED FOR NEW DUCTWORK. PATCH, TAPE, TEXTURE AND PAINT AS REQUIRED AFTER INSTALL. FIELD VERIFY EXACT EXISTING CONDITIONS OF CEILING SPACE AND MODIFY DUCT AS REQUIRED TO MAINTAIN DESIGN INTENT FOR CEILING SPACE CONDITIONS NOT EXPECTED.
- 6 RUN DUCTWORK IN EXISTING SOFFIT SPACE. REMOVE WALL AS REQUIRED TO INSTALL NEW DUCTWORK AND GRILLES. INSTALL NEW WALL AS EXISTING CONDITIONS. PATCH, TAPE, TEXTURE AND PAINT AS REQUIRED.
- 7 NO WORK TO BE DONE IN THIS ROOM. PROTECT DURING CONSTRUCTION.
- 8 PENETRATE AND INSTALL LINTEL AS NEEDED FOR PENETRATION THROUGH EXISTING BRICK WALL. FIELD VERIFY EXISTING CONDITIONS IN CEILING SPACE. INSTALL COVER AFTER CONSTRUCTION. MIN TWO 90° DUCT ELBOWS BEFORE PENETRATION FOR SOUND ISOLATION.
- 9 NEW WALL TO BE INSTALLED IN LOCATION AS SHOWN FOR NEW MECH ROOM.
- 10 REMOVE EXISTING CEILING AS REQUIRED FOR NEW DUCTWORK. PATCH, TAPE, TEXTURE AND PAINT AS REQUIRED AFTER INSTALL. FIELD VERIFY EXACT EXISTING CONDITIONS OF CEILING SPACE AND MODIFY DUCT AS REQUIRED TO MAINTAIN DESIGN INTENT FOR CEILING SPACE CONDITIONS NOT EXPECTED. MIN OF TWO 90° DUCT ELBOWS BETWEEN ROOM GRILLES/DIFFUSERS FOR SOUND ISOLATION.
- 11 MOUNT NEW CONDENSING UNIT ON 4" CONCRETE PAD WITH 1" THICK NEOPRENE PADS UNDER EACH CORNER FOR VIBRATION ISOLATION. PAD TO BE MIN 6" LARGER THAN CONDENSING UNIT ALL SIDES. REMOVE SHRUBS AS REQUIRED. SEE DETAILS ON SHEET ME3.1.
- 12 COVER EXPOSED REFRIGERANT LINES WITH EITHER NEW FUR-OUT OR PLASTIC COVER TO MATCH COLOR OF EXISTING WALL.
- 13 RUN REFRIGERATION LINES IN CEILING SPACE AS MUCH AS POSSIBLE.
- 14 INSTALL NEW FURR-OUT AS HIGH AS POSSIBLE IN LOCATION AS SHOWN FOR NEW DUCTWORK. FINISH FURR-OUT TO MATCH CONDITIONS OF EXISTING WALL.
- 15 SEE OUTSIDE REFRIGERATION COVER DETAIL. OUTSIDE REFRIGERATION ALONG BUILDING. FINISH REFRIGERATION COIL CONNECTION DETAILS ON SHEET ME3.2.
- 16 RUN 8" OUTSIDE AIR DUCT TO OUTSIDE SOFFIT OR CEILING WITH INSECT SCREEN. INSTALL MOTORIZED DAMPER IN VERTICAL PORTION OF DUCT AND INTERLOCK WITH FUNCTION OF NEW FAN COIL. BALANCE TO CFM AS INDICATED ON SCHEDULE ON SHEET ME3.0. SEE DETAILS ON SHEET ME3.1. OUTSIDE AIR DUCT LOCATION AND ROUTE AS SHOWN ON PLANS FOR CLARITY. FIELD VERIFY BEST POSSIBLE ROUTE.
- 17 INSTALL NEW UL RATED SMOKE DETECTOR IN SUPPLY AIR DUCTWORK OF UNIT FOR EMERGENCY FAN SHUT-DOWN. INTERLOCK WITH EXISTING FIRE ALARM SYSTEM.
- 18 INSTALL SMOKE DETECTOR ON EACH SIDE THAT IS ACCESSIBLE & INTERLOCK WITH FIRE ALARM. INSTALL ACCESS BOX TO DAMPER FOR MANUAL RESET. SEE DETAIL ON SHEET ME3.2.
- 19 CUT CEILING AS NECESSARY TO ACCESS ATTIC TO INSTALL NEW DUCTWORK. PATCH, TAPE, TEXTURE, AND PAINT AS NECESSARY OR INSTALL NEW ATTIC ACCESS.

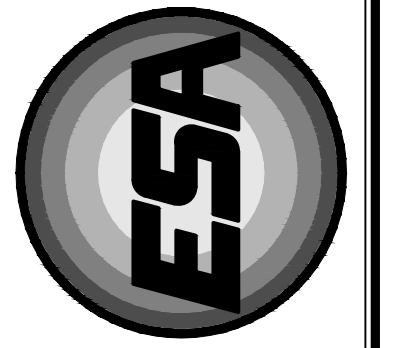
ELECTRICAL NOTES:

- (A) 3/4" TO PANEL AC2. ROUTE THROUGH ATTIC OR UNDER GROUND. SEE COMPRESSOR UNIT SCHEDULE ON SHEET ME3.0 FOR WIRE SIZE.
- (B) NEW PANEL "AC2". SEE SCHEDULE AND POWER RISER ON SHEET ME3.0.
- (C) 20A GFCI WITH IN USE W.P. COVER. RUN 2#12, #12 GND, 1/2". THROUGH ATTIC OR UNDERGROUND TO PANEL NOTED.
- (D) NEW FAN SWITCH. RUN 2#12, #12 GND, 1/2". TO NEW 20A 1P BREAKER IN NEAREST PANEL WITH AVAILABLE SPACE.
- (E) NEW SERVICE RECEPTACLE. COORDINATE EXACT LOCATION WITH MECHANICAL EQUIPMENT. RUN 2#12, #12 GND, 1/2" TO NEW 20A 1P BREAKER IN NEAREST PANEL WITH AVAILABLE SPACE.
- (F) 3/4" TO PANEL "F". INSTALL NEW 3P BREAKER. SEE COMPRESSOR UNIT SCHEDULE SHEET ME3.0 FOR BREAKER AND WIRE SIZE.

MECHANICAL LEGEND

SYMBOL	DESCRIPTION
(T)	ELECTRONIC THERMOSTAT
(FC)	EQUIPMENT SYMBOL
(CHD)	HAND DAMPER
(RBD)	ROUND BRANCH DUCT WITH HAND DAMPER
(IFD)	INSULATED FLEXIBLE DUCT
(RAG)	RETURN AIR OR EXHAUST GRILLE
(CD)	CEILING DIFFUSER

NOTE:
CONTRACTOR TO PROVIDE AND INSTALL (24) NEW ACCESS PANELS EQUAL TO WILLIAMS MFG AT 600 SIZE 24x24 TO FACILITATE INSTALLATION OF DUCTWORK, PIPING, ELECTRICAL AND FAN COIL UNITS. EXACT PLACEMENT TO BE DETERMINED IN THE FIELD.



Engineered Systems Associates
Mechanical Engineers
Dwayne Sudweeks
1355 East Center - Pocatello, Idaho 83201
Phone: (208) 233-0501 Fax: (208) 233-0529 email: esa@engsystems.com

HVAC UPGRADE FOR: PROPERTY # 521-1514
ZONE 5 | SEC 5 | PLAT 004 | PARCEL 15
LDS LAIE 1,8,9
LAIE, HAWAII
55-1109 LANIHULI ST
NORTH SIDE MECHANICAL PLANS
SHEET TITLE: ME2.0
OF: 13

PROJECT: 55-1109 LANIHULI ST
DRWN. BY: T DAVIS
CKD. BY: D SUDWEEKS
JOB NO.: 20040
DATE: NOV 2020
SHEET: ME2.0
OF: 13